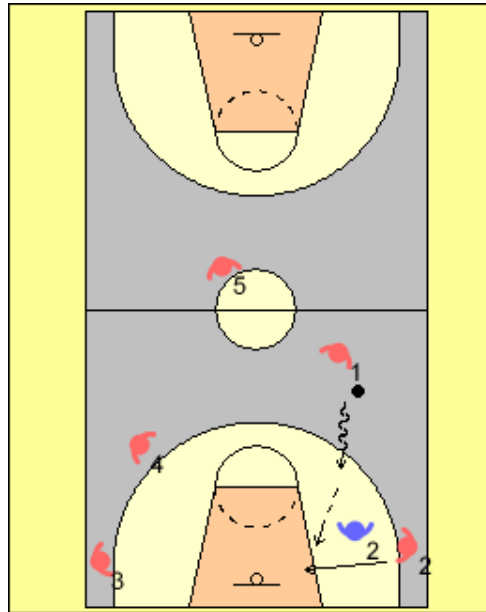


## Phoenix Suns 5 out offense

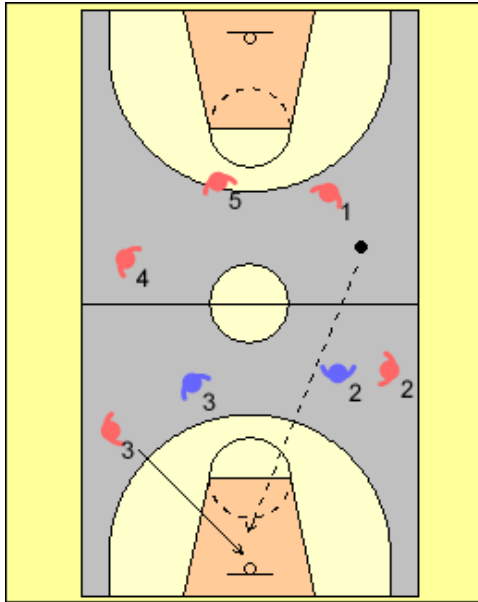


### 1) Transition

- 1 - Nash
- 2 - Bell
- 3 - Marion
- 4 - Diaw
- 5 - Stoudemire

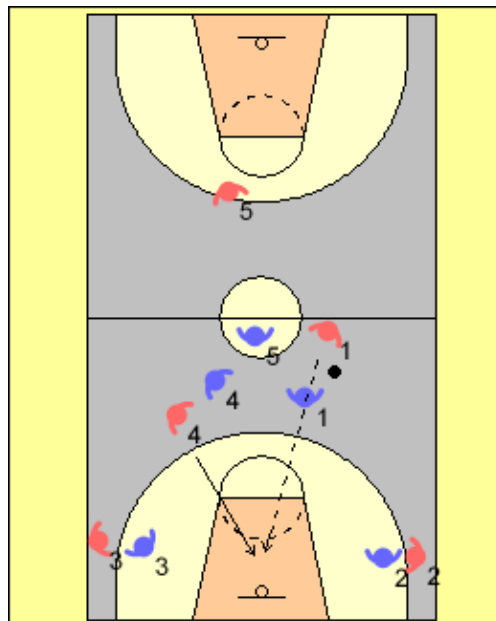
When in transition the Phoenix Suns kept the floor spread. They transitioned into a five out offense 75% of the time. They never clogged the rim with post players. When they did attack the basket they quickly exited to keep the rim open for others. Bell, Marion and Diaw were very interchangeable.

If the rim was open they players attacked it. In this first diagram Bell cuts back door as the wing defender is frozen watching Nash penetrate. When Barbosa comes in the game he is much more active attacking the rim.



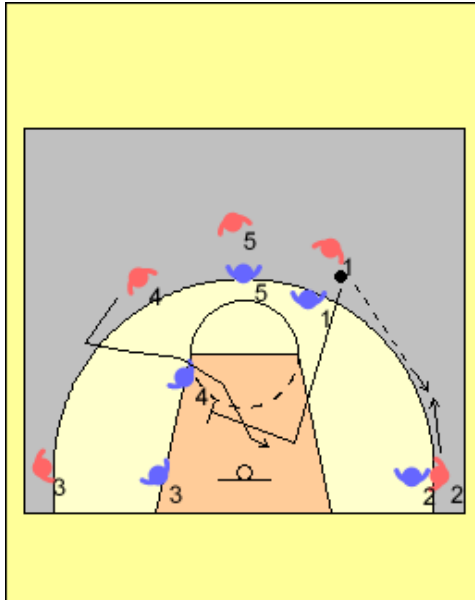
**2) Attacking the rim**

Marion and Barbosa often sprint past their defenders to the open rim. This often happens by the way of run outs on outside jump shots.



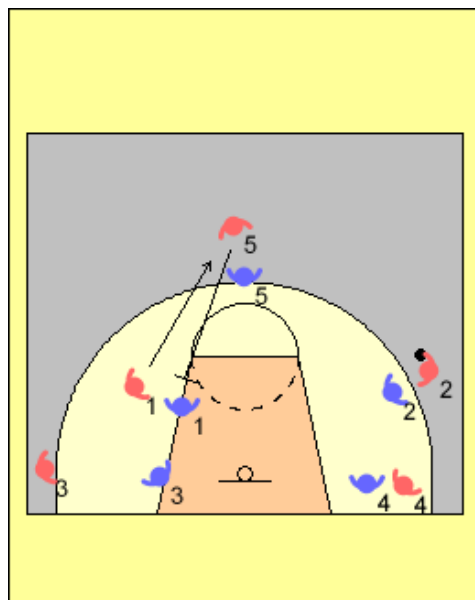
**3) Trailer attacks the rim**

If Diaw or Stoudemire find the rim open as trailers they would also make an attacking cut.



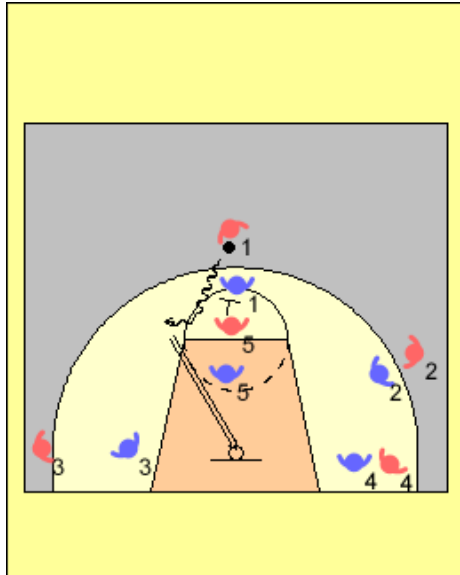
#### 4) Basic set

From the 5 out this was the basic set that was ran the majority of the time. Nash would pass to Bell and cut to the basket and set a screen (bull dog - little on big) for Diaw or Marion, who cut to the rim.



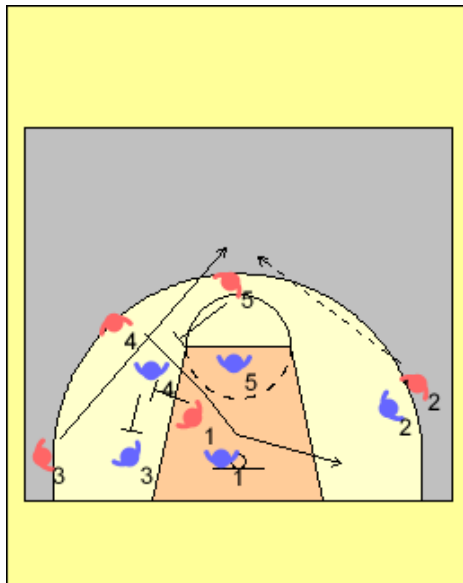
#### 5) Screen the screener

Stoudemire would set a screen (Louie) the screener action for Nash. Note that the first cutter quickly exits the rim. They keep the rim open at all times for back cuts and slips.



### 6) Top ball screen

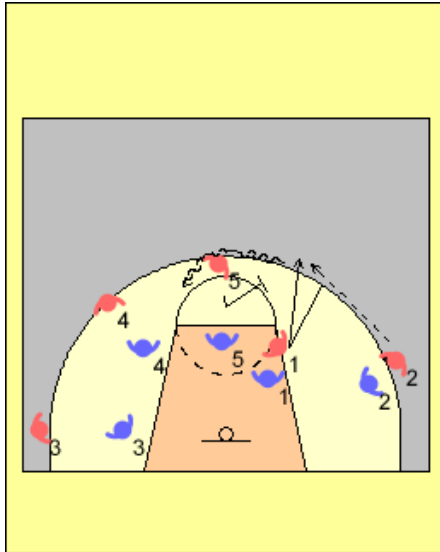
If nothing appeared Stoudemire set a ball screen for Nash at the top. This could take on a myriad of angles. Usually called by Nash. The play to win the game was Nash attacking and shooting a step back of the top pick.



### 7) Wrinkles

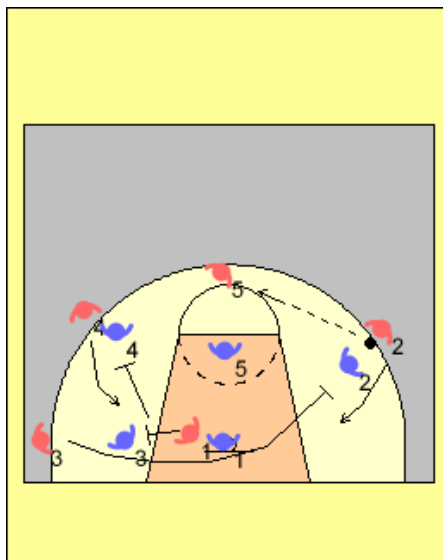
#### Stagger

After setting the screen for Marion, Nash immediately sets a second screen for Bell in the offside corner. Stoudemire sets the second screen to complete the stagger to bring Bell to the top. This was usually run when the shooter was in the offside corner rather than the ball side.



### 8) Fake the screen and replace to ball screen

Late in the game Nash faked the cut and replaced to catch the ball and have the immediate ball screen set. It caught the hedger completely out of position. This was how he got so open at the end of the game.



### 9) Screen for corner followed by back screens

Nash screens for the corner player who cuts through and sets a back screen for the wing who passed to the trailer at the top. Nash sets a back screen for the wing on his side. If his player helps he gets the ball at the wing and they play ball screen.